

COMPANY PROFILE

We feel proud to introduce ourselves as **Horizon Technologies largest** manufacturer for all type of control panels & feeder pillar panels for any type of industries. **We are "One stop Solution House" for all Automation Solutions PLC, SCADA, PANEL Building, Lighting Automation and Building Automation Solutions.**

Horizon Technologies today boasts of in-house capability of following activities:

- ***Intelligent street lighting.***
- ***Tube well automation***
- ***Boosting pump automation***
- ***Stadium lighting automation***
- ***Panel manufacturing / assembly and testing***
- ***System design & engineering***
- ***Application software development***
- ***Project Management***
- ***Material procurement***
- ***Installation & Commissioning***
- ***Training***
- ***After sales support***
- ***Maintenance contract***
- ***Water & Waste Water Treatment Plant Automation***
- ***Food & Beverages***
- ***Cement***
- ***Process and Control Automation***

We have successfully executed projects in GPRS based Street light Automation and Pump Automation system in:-



and many others.



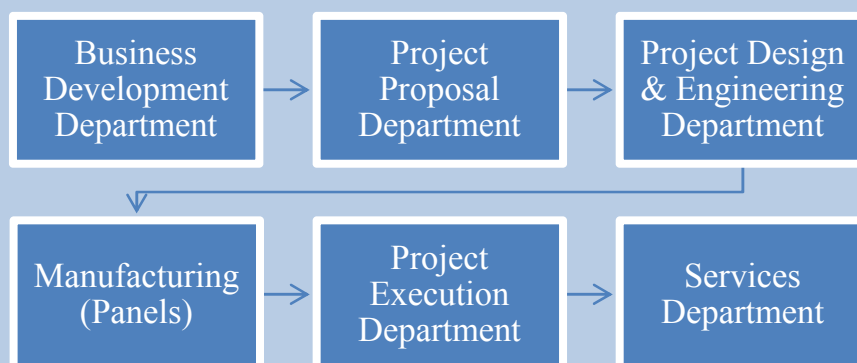
HORIZON TECHNOLOGIES

The parent company started in FY 1994 with a vision to offer cost effective engineering solutions to OEM & End User's with a vision to be pioneer in Industrial Engineering by offering optimized Automation solutions. The company is engaged in industrial automation and panel building with its global brand Merlin Gerin, Square-D, Telemecanique, and Modicon & CG. Which provides complete solution in the field of industrial automation through various ranges of PLC, MMI, AC Drive, Servo Drives, and SCADA etc .“A One stop shop for the Automation Solutions” We specialize in the following:

- ✓ ***Project Proposal Department***
- ✓ ***Project Design & Engineering Department***
- ✓ ***Lighting & water project department.***
- ✓ ***MCC & PCC Panels***
- ✓ ***Control Panels {Design & Manufacturing}***
- ✓ ***Integration , Erection, Commissioning***
- ✓ ***After Sales Service***
- ✓ ***AMC (Annual Maintenance Contract)***

HORIZON has the capability to offer detailed engineering based on customer's functional specifications; alternatively can design a system that meets the best requirements of the customers in the most economical way. Horizon has successfully executed solutions in the area of Manufacturing (lighting Automation ,water distribution , home lighting automation, Indoor/Outdoor lighting automation in stadium, Bottling, packaging, Food & Beverages, Cement, Steel) Building and Infrastructure automation, Environment control (Water treatment), Service Industry (Luxury hotels and Malls) worldwide. These projects were implemented with the objective of increasing productivity, energy conservation and quality control. To name a few brands – ITC foods, Pepsi, Priya Gold, Hyatt hotels, Britannia, Marriott hotels, Welcome group, Meghna Cements. (For detailed list – refer Annexure – I)

Based on key strengths and skill-sets required for various phases of project execution, **HORIZON**'s team is organized as follows:



1.1.1. BUSINESS DEVELOPMENT DEPARTMENT

- ◆ Developing New clients
- ◆ Technical interaction with customers
- ◆ Coordinating with proposal group for proper proposal submittal

1.1.2. PROJECT PROPOSAL DEPARTMENT

- ◆ Developing proposals for new projects
- ◆ Technical interaction with customers
- ◆ Coordinating industrial Automation Training for corporate.

1.1.3. PROJECT DESIGN & ENGINEERING DEPARTMENT

- ◆ Development of FDS and other project documents
- ◆ Developing various drawings
- ◆ FAT execution
- ◆ Quality checks of the system as per company's Quality Assurance Manual
- ◆ Defining pre-commissioning, commissioning and SAT procedures
- ◆

1.1.4. PROJECT EXECUTION DEPARTMENT

- ◆ Software development and integration of various modules as per FDS
- ◆ Conduct FAT as per the approved FAT document
- ◆ Execute pre-commissioning, commissioning and SAT procedures
- ◆ After sales and customer support
- ◆ Development of Operation & Maintenance Manual
- ◆ Panel manufacturing facility with an area of 5000 sq ft equipped with facilities for panel wiring. The facility is divided into three sections:
 - A. Manufacturing
 - B. Testing
 - C. Dispatch

1.1.5. IT SOLUTIONS & SERVICES DEPARTMENT

- ◆ Enterprise business application software solutions development
- ◆ Mobile messaging solutions
- ◆ Web based applications for database

Our team comprises of well qualified and experienced Engineers and business professionals.



PROJECT EXECUTED FOR STREET LIGHTING AUTOMATION

- PROJECT: - **Street Lighting Automation**
SITE:- (Different Location of Delhi)
CLIENT:- **MUNICIPAL CORPORATION OF DELHI**
SYSTEM OFFERED:- (GSM/GPRS based Street Lighting automation)

- PROJECT: - **Street Lighting Automation**
SITE:- (Different Location of Delhi)
CLIENT:- **PUBLIC WORKS DEPARTMENT, DELHI**
SYSTEM OFFERED:- (GSM/GPRS based Street Lighting automation)

- PROJECT: - **Street Lighting Automation**
SITE:- (Different Location of Delhi)
CLIENT:- **NEW DELHI MUNICIPAL CORPORATION , NEW DELHI**
SYSTEM OFFERED:- (GSM/GPRS based Street Lighting automation)

- PROJECT: - **Street Lighting Automation**
SITE:- (Different Location of Delhi)
CLIENT:- **DELHI INTEGRATED MULTI-MODAL TRANSIT SYSTEM LTD**
SYSTEM OFFERED:- (GSM/GPRS based Street Lighting automation)

- PROJECT: - **Lighting & AHU Automation**
SITE:- (Akshardham Temple ,Delhi)
CLIENT:- **AKSHARDHAM TEMPLE , DELHI**
SYSTEM OFFERED:- (PLC based automation)



PROJECT EXECUTED FOR STADIUM LIGHTING & CAR PARKING MANAGEMENT SYSTEM

- PROJECT: - **Car Parking Automation**
SITE:- (INDIRA GANDHI INTERNATIONAL AIRPORT)
CLIENT:- **FAAC INDIA**
SYSTEM OFFERED:- (Complete automation with PLC's & SCADA Based automation)

- PROJECT: - **Stadium Lighting Automation**
SITE:- (JAWAHARLAL NEHRU STADIUM)
CLIENT:- **JAWAHARLAL NEHRU STADIUM**
SYSTEM OFFERED:- (Complete automation with PLC's Based automation)

- PROJECT: - **Stadium Lighting Automation**
SITE:- (SIRI FORT STADIUM)
CLIENT:- **PHILIPS INDIA LIMITED**
SYSTEM OFFERED:- (Complete automation with PLC's , Man machine interface & SCADA Based automation)

- PROJECT: - **Stadium Lighting Automation**
SITE:- (YAMUNA SPROTS COMPLEX)
CLIENT:- **PHILIPS INDIA LIMITED**
SYSTEM OFFERED:- (Complete automation with PLC's , Man machine interface & SCADA Based automation)

- PROJECT: - **Stadium Lighting Automation**
SITE:- (INDIRA GANDHI STADIUM)
CLIENT:- **INDIRA GANDHI STADIUM**
SYSTEM OFFERED:- (Complete automation with PLC's , Man machine interface Based automation)



PROJECT EXECUTED FOR MCC & PCC PANEL

- PROJECT: - **MCC PANEL**
SITE:- (Different SIX Biscuit Plants)
CLIENT:- **PRIYA GOLD BISCUITS (NOIDA)**
SYSTEM OFFERED:- (MCC panels, PCC panels)
- PROJECT: - **LT PANEL**
SITE:- (Different Location of Roorkee)
CLIENT:- **Roorkee ,Cantt**
SYSTEM OFFERED:- (LT Panel)
- PROJECT: - **MCC PANEL**
SITE:- (Different Plants Across The Country)
CLIENT:-**ITC LIMITED**
SYSTEM OFFERED:- (MCC panels, PCC panels)
- PROJECT: - **MCC PANEL**
SITE:- (ODISHA)
CLIENT:-**BHUSHAN POWER & STEEL**
SYSTEM OFFERED:- (MCC panels, PCC panels)
- PROJECT: - **MCC PANEL**
SITE:- (HISAR ,HARYANA)
CLIENT:-**JINDAL AGRO PVT LTD.**
SYSTEM OFFERED:- (MCC panels, PCC panels)



PROJECT EXECUTED FOR WATER & WASTE WATER TREATMENT PLANT AUTOMATION

- PROJECT: - **AMBUR ECONOMIC DEVELOPMENT ORGANISATION LIMITED**
CAPACITY: - (Common Effluent Treatment Plant VALAYAMPET – **4000 M3/DAY**)
(Common Effluent Treatment Plant THUTHIPET – **2400 M3/DAY**)
(Common Effluent Treatment Plant MALLIGAITHOPE – **800M3/DAY**)
SITE: - VALAYAMPET, THUTHIPET, MALLIGAITHOPE
CLIENT: - UEM INDIA LIMITED
CONSULTANT :-
VALUE: - 42 LAC
SYSTEM OFFERED: - (Modicon Premium Platform of Telemecanique With 1000 Tag Scada System)

- PROJECT: - **TIRPUR INDUSTRIAL WASTE WATER RECYCLING COMPANY LIMITED**
CAPACITY: - (**3x112.6 M3/Hr – RO PLANT**)
SITE: - CHINNAKARI-CETP, KASIPALYAM-CETP, KUNANKALPALLYAM-CETP
CLIENT: - UEM INDIA LIMITED
CONSULTANT :-
VALUE: - 45 LAC
SYSTEM OFFERED: - (Modicon Premium Platform of Telemecanique With 1500 Tag Scada System)

- PROJECT: - **ANDYPALAYAM** - CETP, **MANNARAI**- CETP, **KARAIPUDAR** - CETP - CHENNAI
CAPACITY: - (**4500 M3 / DAY R.O. PLANT**)
(**4200 M3 / DAY R.O. PLANT**)
(**4200 M3 / DAY R.O. PLANT**)
SITE:- CHENNAI
CLIENT:- NUCHEM INDIA LIMITED
CONSULTANT
VALUE:- 48 LAC
SYSTEM OFFERED:- (Modicon Premium Platform Of Telemecanique With 1000 Tag Scada System)



PROJECT EXECUTED FOR CEMENT PLANT AUTOMATION

- PROJECT: - **ARABIAN BULK TERMINAL CO. LTD. (ABTCL) PORT SUDAN**
CAPACITY: - (600 TPD cement)
SITE:- (PROJECT- CEMENT TERMINAL - SUDAN)
CLIENT:- CON-WEIGH SYSTEMS PRIVATE LIMITED
CONSULTANT :- HOLTEC CONSULTING PRIVATE LIMITED
VALUE:- 40 LAC
SYSTEM OFFERED:- (Modicon Premium Platform Of Telemecanique With Approx 3000 i/o's & two SCADA stations)

- PROJECT: - **MEGHNA CEMENTS (BANGLADESH)**
CAPACITY: - (900 TPD cement)
SITE:- (BANGLADESH)
CLIENT:- CON-WEIGH SYSTEMS PRIVATE LIMITED
CONSULTANT :-
VALUE:- 25 LAC
SYSTEM OFFERED:- (Modicon Premium Platform Of Telemecanique With 1500 i/o's with SCADA station)

- PROJECT: - **CEMENT PLANT – AFRICA**
CAPACITY: - (Project 03112 – 600 TPD Cement Plant – Africa)
SITE:- (PROJECT CEMENT PLANT – AFRICA)
CLIENT:- M/S ASHOKA TECHNOLOGIES
CONSULTANT :- HOLTEC CONSULTING PRIVATE LIMITED
VALUE:- 50 LAC
SYSTEM OFFERED:- (Modicon Premium Platform Of Telemecanique 2500 i/o's with SCADA station)



PROJECT EXECUTED FOR FOOD & BEVERAGE PLANT AUTOMATION

- PROJECT: - COMPLETE BISCUIT MANUFACTURING LINE AUTOMATION
SITE:- (Different Plants Across The Country)
CLIENT:- **ITC LIMITED**
CONSULTANT :-
VALUE:- ORDER VALUE-200 LAKHS
SYSTEM OFFERED:- (Complete Biscuit manufacturing line automation with Premium PLC's , SCADA, Man machine interface)

- PROJECT: - COMPLETE BISCUIT MANUFACTURING LINE AUTOMATION
SITE:- (Different SIX Biscuit Plants)
CLIENT:- **PRIYA GOLD BISCUITS (NOIDA)**
CONSULTANT :-
VALUE:- ORDER VALUE-180 LAKHS
SYSTEM OFFERED:- (Complete Biscuit manufacturing line automation including, MCC panels, PCC panels, Drives panels, Cable laying and contracting with Premium PLC's , SCADA, Man machine interface)

- PROJECT: - MATERIAL HANDLING
SITE:- (Different Biscuit Plants)
CLIENT:- **DUKES INDIA**
CONSULTANT :-
VALUE:- ORDER VALUE-56 LAKHS
SYSTEM OFFERED:- (Complete automation with Premium PLC's , Man machine interface)

And few more.....

A.A Elevators	Flex Engineering	M Plast Machines	Siddharth Hotel
Aarti Foods	Gail India Limited	Merriot Welcome Hotels	Somany Tiles (Bhadurgarh)
Anmol Biscuit	Grundfoss Pumps (Delhi)	Mukund Food	SRF
Bhagwati Biscuit	Hindustan Elevators	Naini Papers (Rudrapur)	Supreme Elevators
Bhushan Steels	Hindustan Zinc Ltd (Udaipur)	NFI	Timex Watches
Brittania	Hyatt Hotels (Delhi)	Nuchem Weir (Faridabad)	Triveni Projects
CBL Foods (Shrilanka)	Hyper Filtration	Parle Biscuit	United Breweries
Coca Cola	Interplast Machines Ltd	Rampur Distelleries	Universal Tubes (Dubai)
Dawat Rice	Isgec Thompson	Real Elevators	Vasant Continental
Easa Elevators	Jaypee Agra Hotel	S S Engineering	
Flex Chemicals	Knight Queen	Schneider Electric (Ssc Division)	

HORIZON strives to continually improve its products & services through development and design, with the involvement of people, and is committed to the relentless pursuit of excellence in offering complete automation solutions on global platform and services that embody the very best in the industry.

We would like you to register / remember our name in your esteemed list of suppliers for any kind of "Automation Solutions and products" as mentioned above and in future, if any need arises, please do write or contact us.

Looking for positive response and long- term business association with you.

Should you require any further information please feel free to contact us.



Horizon Technologies
Plot No. 409,Udyog Kendra-II,
Ecotech -III, Greater Noida,
Gautam Budh Nagar – 201308
Phone No. +91 120 2397038
Mob No: 9711994001, 9711994004
Email: sales@horizontechnologies.in